



171 COURT STREET

THE CORNER OF DEAN AND COURT STREETS
COBBLE HILL - BROOKLYN, NY

171 COURT STREET

THE CORNER OF DEAN AND COURT STREETS



PROPOSED RENDERING

SPACE A

GROUND FLOOR | 2,000 - 2,300 SF
BASEMENT | 2,300 SF

SPACE B

GROUND FLOOR | 500 - 800 SF
BASEMENT | 500 SF

FRONTAGE

SPACE A : 23 Ft on Court Street,
80 Ft on Dean Street

SPACE B : 17 Ft on Court Feet

TOP FEATURES

- CEILING:
Ground Floor: 9' 6"
Basement: 8' 3"
- High End Retail Located Nearby
- The BEST corner in Cobble Hill
- Largest available floorplate on Prime Court Street, in Cobble Hill
- Logical divisions will be considered

ASKING RENT

Per request

POSSESSION

90 Days from Lease Signing

TRANSPORTATION

Walking Distance to the
Bergen Avenue subway stop
F **G** with annual subway
ridership of 3,577,496 and
the Borough Hall subway
stop **2** **3** **4** **5** with
annual subway ridership of
10,135,722

HUGH FINKEL

908.447.7167
hugh@realnewyork.com

SETH KESSLER

330.360.1787
seth@realnewyork.com

REALNY | COMMERCIAL

FLOOR PLAN

171 COURT STREET | THE CORNER OF DEAN AND COURT STREETS

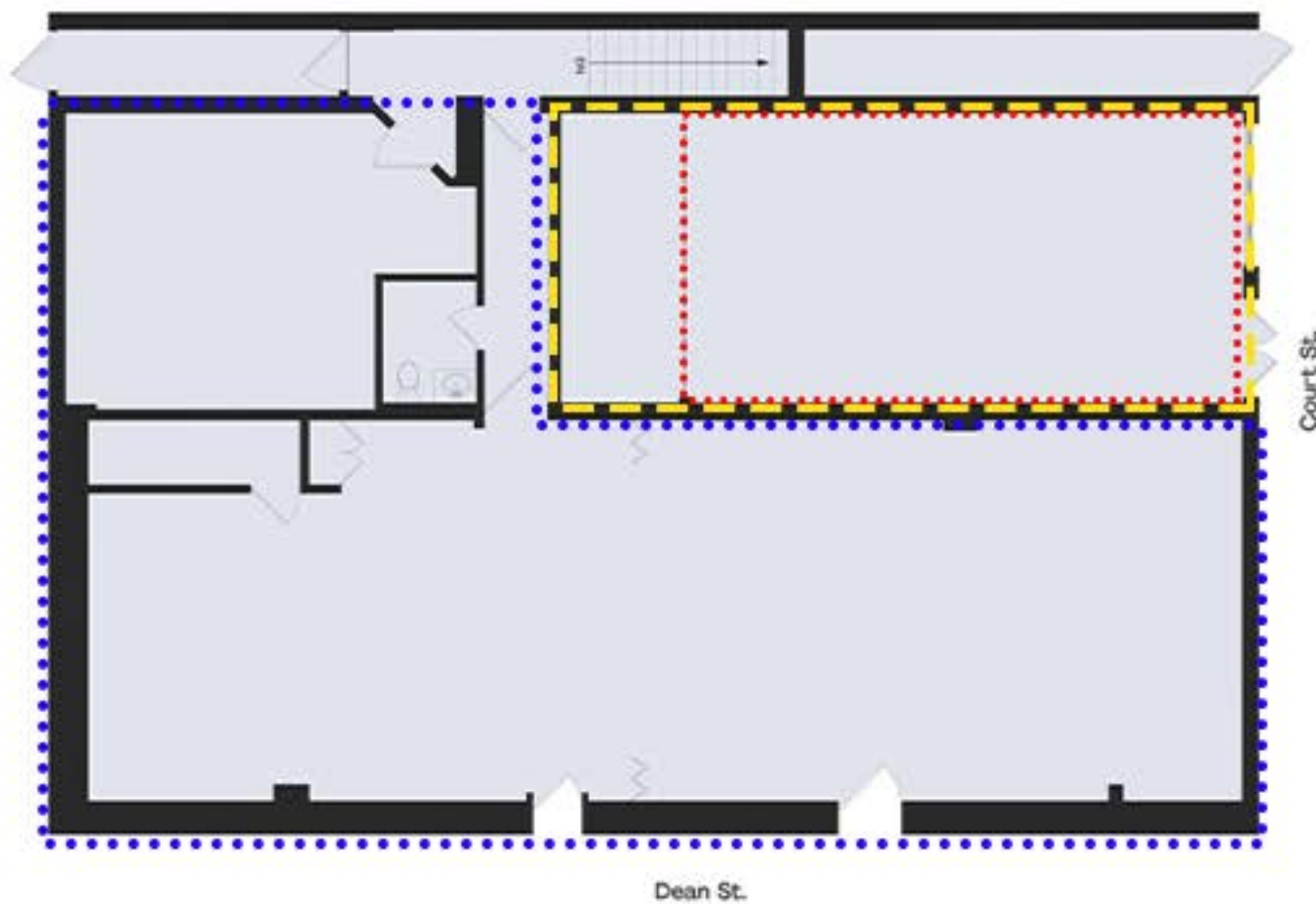
SPACE A

2,000 - 2,300 SF

SPACE B

800 SF

500 SF



GROUND FLOOR



BASEMENT

HUGH FINKEL

908.447.7167
hugh@realnewyork.com

SETH KESSLER

330.360.1787
seth@realnewyork.com

REALNY | COMMERCIAL

171 COURT STREET

