

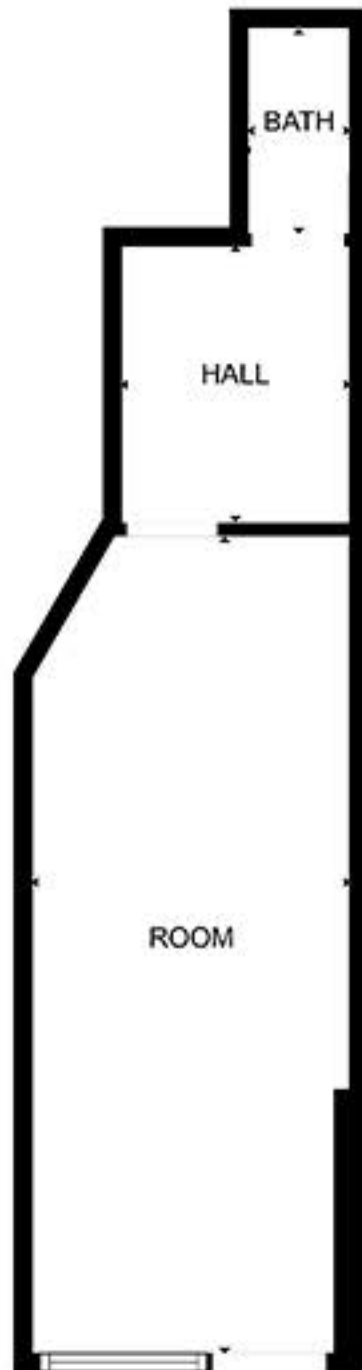


191 HENRY STREET

BETWEEN JEFFERSON AND CLINTON STREETS
LOWER EAST SIDE | NEW YORK

191 HENRY STREET

BETWEEN JEFFERSON AND CLINTON STREETS



SIZE

GROUND FLOOR | 500 sq. ft
BASEMENT | 250 sq. ft
FRONTAGE | 10 feet

POSSESSION

1st of March 2024

TERM

Negotiable

TOP FEATURES

- Across street from NYC Health Gouverneur hospital
- On a residential neighborhood
- One block away from Seward Park and East Broadway subway station
- Currently an art gallery
- Suitable for all dry uses

ASKING RENT

Per request

TRANSPORTATION



ERIC WONG

212.279.1289
ewong@realnewyork.com

SETH KESSLER

330.360.1787
seth@realnewyork.com

REALNY | COMMERCIAL