



367 EAST 62ND STREET

BETWEEN 1ST AVENUE AND 2ND AVENUE
LENOX HILL

367 EAST 62ND STREET

BETWEEN 1ST AVENUE AND 2ND AVENUE



SIZE

GROUND FLOOR | 500 SF
BASEMENT | 300 SF

POSSESSION

Immediate

COMMENTS

- Office Use Only
- Prime UES btwn 1st & 2nd Avenue
- Turn Key Ready

ASKING RENT

Available Upon Request

TERM

1-10 Years

TRANSPORTATION



JOHN BRIAN

(212) 256-1443

JBrian@REALNewYork.com

GEORGE WRIGHT

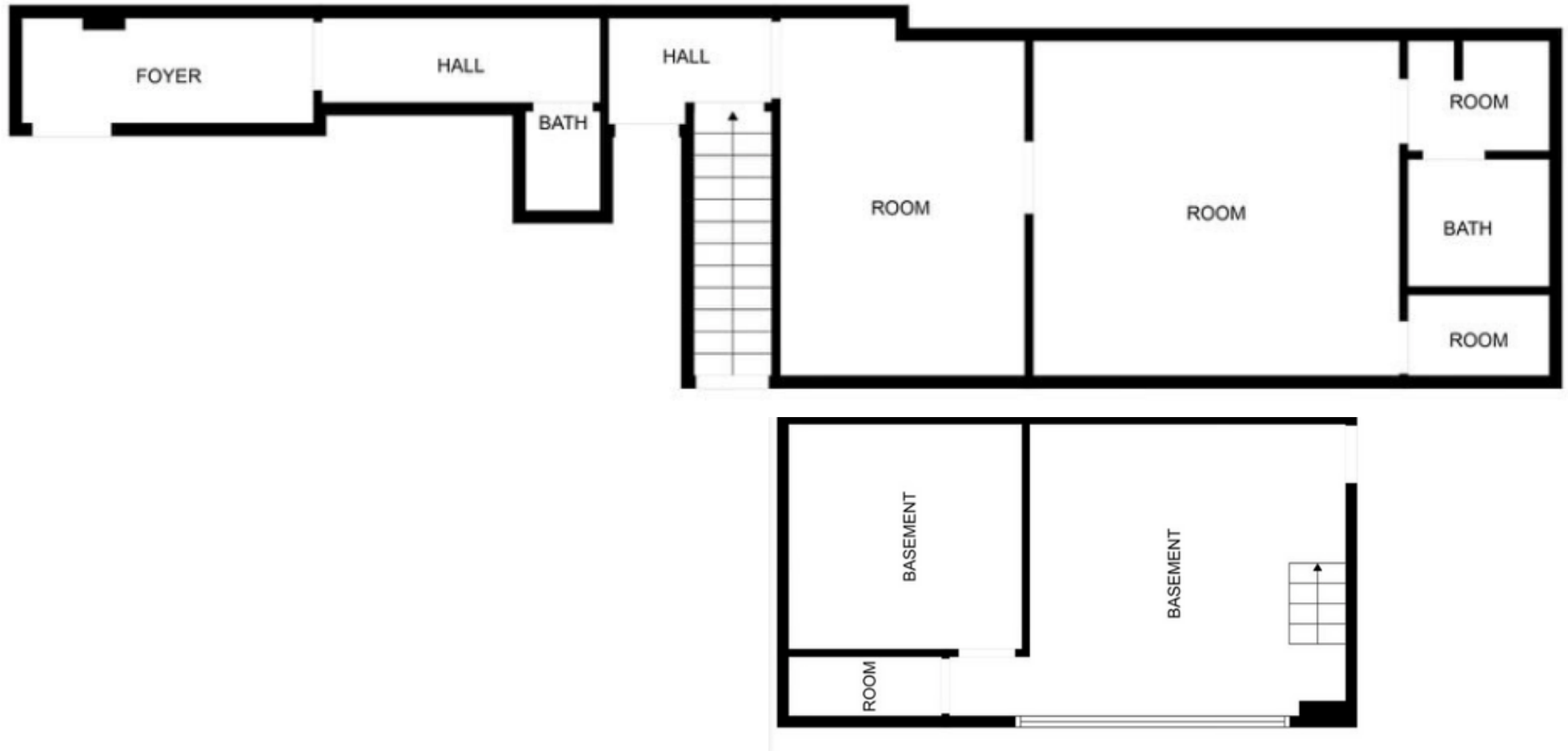
(917) 363-7072

GEORGE@REALNewYork.com

REALNY | COMMERCIAL

367 EAST 62ND STREET

BETWEEN 1ST AVENUE AND 2ND AVENUE



JOHN BRIAN

(212) 256-1443

JBrian@REALNewYork.com

GEORGE WRIGHT

(917) 363-7072

GEORGE@REALNewYork.com

REAL^{NY} | COMMERCIAL